



**COLON HYDROTHERAPY, INC.®**

3145 SW 74<sup>th</sup> Terrace, Ocala, FL 34474

Order Lines 352-401-0303

[www.colonhydrotherapy.com](http://www.colonhydrotherapy.com) ~ E-Mail: [sales@colonhydrotherapy.com](mailto:sales@colonhydrotherapy.com)



## CATALOG

### **PRESS RELEASE - 1<sup>st</sup> In the Industry**

**Cytotoxicity Tested and Titanium Oxide Free Speculums  
and DEHP Free Tubing California Proposition 65 Compliant**

**CLEARWATER IS GOING**



**GREEN**

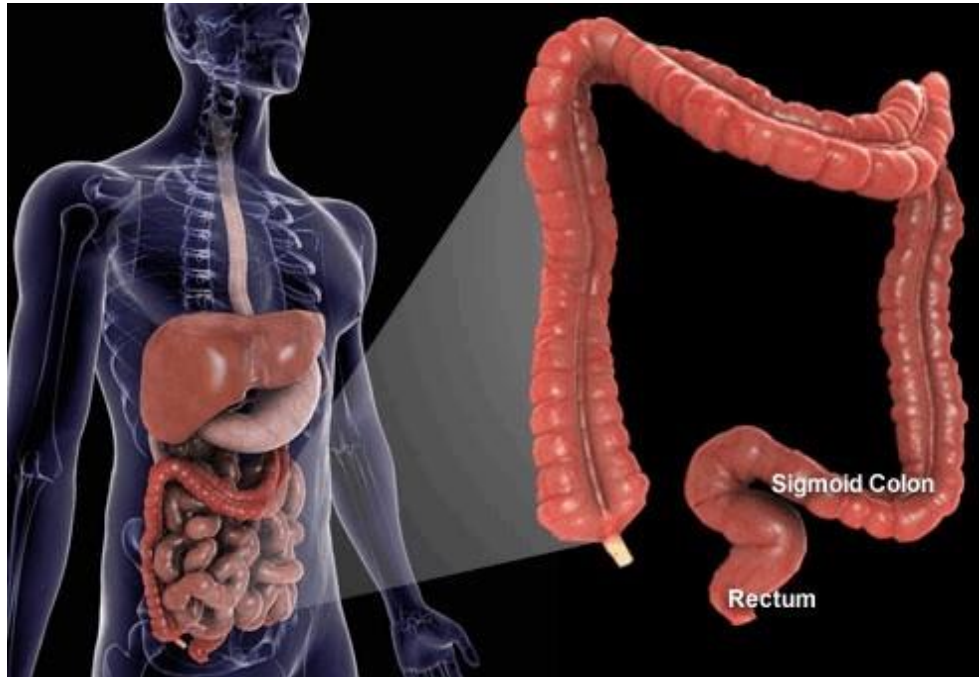


COLON HYDROTHERAPY, INC.®

3145 SW 74<sup>th</sup> Terrace, Ocala, FL 34474

Order Lines 352-401-0303

www.colonhydrotherapy.com ~ E-Mail: sales@colonhydrotherapy.com



## LABELING

### **ADEQUATE DIRECTIONS FOR USE:**

Under no circumstances should the patient be left unattended.

21CFR801.109

### **INDICATION FOR USE STATEMENT:**

The indication for use of this device must be restricted to colon cleansing when medically indicated, such as before radiological or endoscopic examination.

21CFR876.5220

### **PRESCRIPTION STATEMENT:**

“Caution: Federal law restricts this device to sale by or on the order of a physician.”

21CFR801.109



COLON HYDROTHERAPY, INC.®

3145 SW 74<sup>th</sup> Terrace, Ocala, FL 34474

Order Lines 352-401-0303

www.colonhydrotherapy.com ~ E-Mail: sales@colonhydrotherapy.com

## COLON PREP EQUIPMENT AND SUPPLIES

### TABLE OF CONTENTS

#### *Clearwater Colon Hydrotherapy Equipment*

Labeling .....	1
Benefits of Our Equipments .....	5
Background .....	6
PPC-101 Clinical Model with and w/o Specimen Collector.....	7
PPC-101 Clinical Model with Built In UV Filtration System.....	8
PPC-101 Clinical Features .....	9
PPC-101 “The Traveler” Features.....	13
PPC-101 “The Traveler” Dual Purpose .....	14
PPC-101 “The Traveler” with Sewage Tank Stand .....	16
“The Traveler” Stainless Steel Stand.....	16

#### *Water Filtration /ystem*

Granular Activated Carbon Cartridges (10 Inch).....	17
(1 Micron Taste/Odor/Chemical) (5 Inch) .....	17
Fiber Cartridges (10 Inch) .....	17
(Rust/Sediment 1 Micron (5 Inch).....	17
Carbon Filter (Gac Inline) for Other Manufacturer Units (10 Inch).....	17

#### *Disposable /peculums*

Speculum Inflow water Line Disconnects.....	18
Bio-Compatibility Test Results.....	19
Speculum Features.....	19
AutoShip Program.....	20





COLON HYDROTHERAPY, INC.®

3145 SW 74<sup>th</sup> Terrace, Ocala, FL 34474

Order Lines 352-401-0303

www.colonhydrotherapy.com ~ E-Mail: sales@colonhydrotherapy.com

## ***Therapy Table & Accessories***

<b>Adjustable Electric Therapy Table.....</b>	<b>22</b>
<b>Light Weight Portable Tables.....</b>	<b>23</b>
<b>Table Cart Carrier.....</b>	<b>23</b>
<b>Pillow Wedge with Vinyl Cover.....</b>	<b>23</b>
<b>Bolster Round Supports (Knees/Ankles) .....</b>	<b>23</b>
<b>Therapist's Chair .....</b>	<b>24</b>
<b>Step Stool .....</b>	<b>24</b>
<b>Table Cover .....</b>	<b>24</b>
<b>Table Cover Warmer.....</b>	<b>24</b>

## ***Colon Therapy Charts***

<b>Colon Model .....</b>	<b>25</b>
<b>Colon Therapy .....</b>	<b>25</b>
<b>Digestive System.....</b>	<b>25</b>
<b>Blueprint for Health Chart .....</b>	<b>25</b>
<b>Diseases of the Digestive System.....</b>	<b>26</b>
<b>Gastroesophageal Disorders and Digestive Anatomy .....</b>	<b>26</b>
<b>Bowel Reflex Points .....</b>	<b>26</b>
<b>Inflammatory Bowel Disease (IBD).....</b>	<b>26</b>
<b>Understanding Irritable Bowel Syndrome (IBS) .....</b>	<b>27</b>

## ***Products & /upplies***

<b>Stainless Steel View Tube Brush Holder .....</b>	<b>27</b>
<b>Gowns and Footies.....</b>	<b>27</b>
<b>Books (Complete List in Product Info &amp; Price Section pg 33) .....</b>	<b>28</b>
<b>Supply Packet.....</b>	<b>28</b>
<b>Speculum Sample Pack.....</b>	<b>28</b>
<b>Gloves.....</b>	<b>28</b>

3145 SW 74<sup>th</sup> Terrace, Ocala, FL 34474

Order Lines 352-401-0303

www.colonhydrotherapy.com ~ E-Mail: sales@colonhydrotherapy.com

## ***Federal Code of Regulations on Purchasing Device and /peculums***

**Sample Letter/Script on Doctors Letterhead ..... 29**

## ***Boosting Your Business - Using Video E-Mail***

**Video E-Mail Program ..... 30**

## ***Product Information and Price List***

**Item Price List ..... 31**

## ***Office Order Form***

**Fax Order Form for Purchases ..... 35**



**COLON HYDROTHERAPY, INC.®**

3145 SW 74<sup>th</sup> Terrace, Ocala, FL 34474

Order Lines 352-401-0303

www.colonhydrotherapy.com ~ E-Mail: sales@colonhydrotherapy.com

## **SOME OF THE REASONS WHY OUR EQUIPMENT WILL GREATLY BENEFIT YOU AND YOUR PATIENTS!**

**Equipment used for cleansing the colon - such as, before radiological or endoscopic examinations. Used for preparation for a colonoscopy.**

- ◆ **Designed for use in Gastroenterology Clinic, Hospitals & Nursing Homes**
- ◆ **Cuts down on bad preps**
- ◆ **Portable can go to bedside of Colonoscopy table**
- ◆ **Sewage Tank Stand is great when plumbing can not be done**

**Abstract on Colon Hydrotherapy for Pre-endoscopy Preparation  
(Copy of Abstract upon request)**

**Do you have bad preps?**

- ◆ **Our Equipment monitors the Colon pressure throughout the whole session**
- ◆ **Completely closed system**
- ◆ **All Stainless Steel Cabinets**
- ◆ **Pressure & Temperature Controlled with safety features**
- ◆ **Water in View Tube is full at all times for viewing and inspecting specimens**
- ◆ **Safe connects and disconnects of Water, Sewer, and Electrical**
- ◆ **Options for Water Line and Waste Line connections**
- ◆ **Quick and easy connector device on each and every Speculum kit line**
- ◆ **Disposable Speculums that comes in different sizes and styles**
- ◆ **Speculums are designed for easier insertion and greater client comfort**
- ◆ **Bio-Compatibility test results study - given Superior Medical Rating**
- ◆ **Free 2 full days of Training with purchase of a unit**

**Do you have different locations?**

- ◆ **Our Equipment is the answer. We have the Patent on Portability**
- ◆ **Patent on the ONLY Speculum (rectal nozzles) that are medical grade plastic and designed anatomically correct.**
- ◆ **ONLY inflow water line that is DEHP FREE (Important for your sensitive patients)**



3145 SW 74<sup>th</sup> Terrace, Ocala, FL 34474

Order Lines 352-401-0303

www.colonhydrotherapy.com ~ E-Mail: sales@colonhydrotherapy.com

Clearwater Colon Hydrotherapy, was established in 1992. Mary Ruth Baker, owner, has been in the field of Colon Hydrotherapy for over 35 years. Her commitment has always been to have the highest standard of quality and client care. These high standards are now available in Clearwater Colon Hydrotherapy systems. These systems have the best mechanical and operational design, which makes them stand alone as the most efficient colon prep for Colonoscopy, colon cleansing equipment that is on the market today.

Mary Ruth is anxious to teach and support you in the operations of the Clearwater Colon Hydrotherapy equipment and also with the knowledge of the business operations towards setting up a complaint office.

An installation manual & video is provided when you purchase a unit, that demonstrates the complete installation process. A two day training seminar on the installation, operation and maintenance of the equipment is provided free of charge, if you schedule your training within 30 days of your initial equipment purchase, at our corporate headquarters in Ocala, Florida, USA. If you are interested in business and/or advanced training, please call 352-401-0303.

We are very excited in presenting “The Traveler” (US Patent No. 5,871,463), the only portable colon hydrotherapy equipment in the world. **Our patented, disposable speculums are available in 2 styles (Bulb and Straight)** and also 2 sizes (Large and Small)size. They are manufactured and made of the finest quality medical grade plastic, which ensures patient comfort and safety.

We hope that you enjoy the packet and Video on the Clearwater Colon Hydrotherapy systems and please feel free to contact us with any questions you may have.

Your Health Matters,  
Mary Ruth Baker, President - MA4612



COLON HYDROTHERAPY, INC.®

3145 SW 74<sup>th</sup> Terrace, Ocala, FL 34474

Order Lines 352-401-0303

www.colonhydrotherapy.com ~ E-Mail: sales@colonhydrotherapy.com

## COLON THERAPY EQUIPMENT & SUPPLIES INTRODUCING THE PPC-101 COLON THERAPY SYSTEM

### FEATURES

### PPC-101

- ◆ Moveable (on caster wheels)
- ◆ Quick disconnects for water, sewer & electrical line.
- ◆ All Stainless Steel Cabinet
- ◆ Size 41" high - 16" deep - 19" wide
- ◆ Weight 110 lbs
  
- ◆ Completely Closed System
- ◆ Sink & Faucet built in
- ◆ Drawer & Cabinet
- ◆ Self-Disinfectant System
- ◆ Natural Light Behind View Tube
- ◆ Pressure & Temperature Controlled with Safety Features
- ◆ Dependable and Safe Operation
- ◆ Specimen Collector Available



*The PPC-101 is in compliance with all design and manufacturer guidelines set by Regulatory Agencies.*

- ◆ Built -In Ultra Violet Light, with Water Filtration System with a 1 Micron Sediment and 0.5 Micron Carbon, 4 filters in the bottom cabinet.

Operational Educational Material are Available.





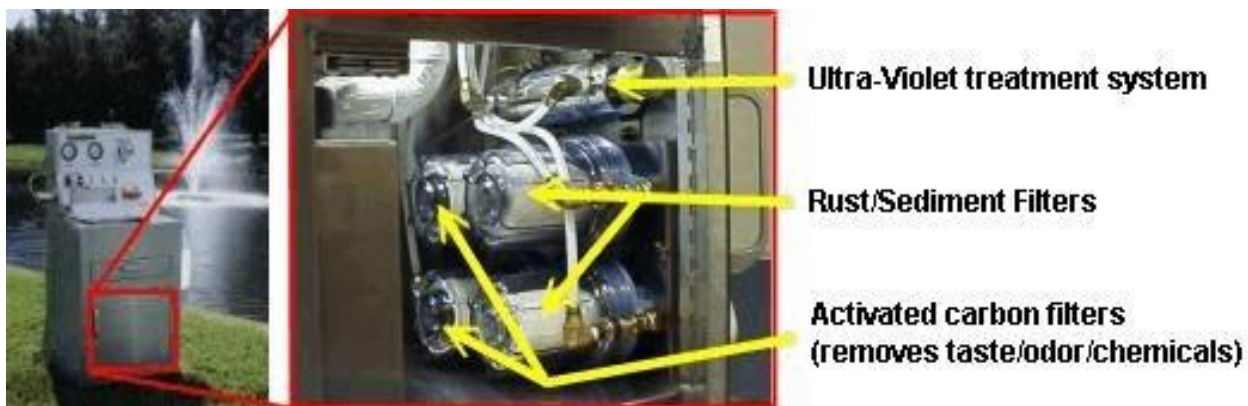
**COLON HYDROTHERAPY, INC.®**

3145 SW 74<sup>th</sup> Terrace, Ocala, FL 34474

Order Lines 352-401-0303

www.colonhydrotherapy.com ~ E-Mail: sales@colonhydrotherapy.com

**The PPC-101 Clinical Model now comes with the Rust/Sediment, Carbon and Ultra-Violet water treatment system built-in!**



**Available: PPC-101 CLINICAL MODEL WITH SPECIMEN COLLECTOR**





COLON HYDROTHERAPY, INC.®

3145 SW 74<sup>th</sup> Terrace, Ocala, FL 34474

Order Lines 352-401-0303

www.colonhydrotherapy.com ~ E-Mail: sales@colonhydrotherapy.com

## PHYSICAL SPECIFICATIONS

Size: 41" Height  
16" Depth  
19" Width

Weight: 110 lbs.

Connections: Hot & Cold Water,  
Electrical and Drainage Lines  
Cabinet: Stainless Steel Construction  
Wheels: Stainless Steel Casters

## ACCESSORIES

- ◆ Disposable Speculums and Tubing
- ◆ Specimen Collector (Optional)



## FEATURES

Clearwater Colon Hydrotherapy, Inc. offers a colonic irrigation system with a one year warranty.

The Professional Colonic Equipment is equipped with the following features:

- ◆ Completely Closed System
- ◆ Automatic Sanitation System
- ◆ Pressure & Temperature control & shut down valve
- ◆ Water Pressure Regulator - Pressure Relief System
- ◆ Storage Cabinet
- ◆ Two Quick Disconnects and lines for water hookup and sewage drainage lines and connections
- ◆ Natural Light Behind View Tube
- ◆ Built-In Rust/Sediment, Carbon & UV water treatment system

## EXCLUSIVE FEATURES

- ◆ Drawer and cabinet for storage
- ◆ Sink & faucet for cleaning & disinfectant
- ◆ Portable Cabinet- located anywhere in the room
- ◆ Monitors Pressure throughout the treatment



COLON HYDROTHERAPY, INC.®

3145 SW 74<sup>th</sup> Terrace, Ocala, FL 34474

Order Lines 352-401-0303

www.colonhydrotherapy.com ~ E-Mail: sales@colonhydrotherapy.com

*All PPC's are user friendly. All models have the ability to be movable and portable.*

### **WATER FILTERING SYSTEM**

UV Water Filtration System (UV energy required for destruction of various organisms including bacteria and viruses)

- ◆ The Water Filtration System is specifically designed for Clearwater Colon Hydrotherapy systems.
- ◆ The four filter hot and cold unit is installed in the lower cabinet
- ◆ Standard features include UV lamp indicator with visual monitor
- ◆ Separate hot and cold filters
- ◆ The first stage of filtration is a 1 Micron Sediment filter, filtering sediment, rust, and dirt.
- ◆ The second stage of filtration is a 0.5 Micron Carbon, filtering taste and odor, lead reduction, cyst reduction (giardia, cryptosporidium).
- ◆ The third stage of filtration is a UV bulb, filtering bacteria and viruses.

### **PERFORMANCE SPECIFICATIONS**

- ◆ Equipped with the latest filtering and UV water treatment systems
- ◆ Safe connect and disconnect of: Water, Sewer, and Electrical
- ◆ Portable
- ◆ Regulated Temperature and Pressure
- ◆ Accurate and sensitive indication of pressure and temperature
- ◆ Water in View Tube is full at all times for viewing and inspecting specimens
- ◆ Protection from contamination of the equipment and the client

### **INSTALLATION GUIDELINES**

- / Drain height of 12" or less
- / Water pressure of 40 to 45
- / Water heater of 40 gallons or greater
- / Treatment table height 1 to 2" higher than the view tube
- / Hot and cold water supply lines
- / 110/120 standard wall outlet



COLON HYDROTHERAPY, INC.®

3145 SW 74<sup>th</sup> Terrace, Ocala, FL 34474

Order Lines 352-401-0303

www.colonhydrotherapy.com ~ E-Mail: sales@colonhydrotherapy.com

**COLON HYDROTHERAPY SYSTEM  
PPC-101 (Professional Portable Colonic Equipment)  
CLINICAL MODEL**

**MODEL PPC-101**

**INCLUDES: COLON HYDROTHERAPY SYSTEM PPC-101 WITH:**

- Temperature and Pressure Safety Systems
- Self-Sanitizing Unit
- Built-In Sink & Faucet
- Manual & Installation & Video
- Built-In Rust/Sediment, and Carbon & UV Water Treatment System

**PPC-101 Clinical Model Without Specimen Collector: Call In**

**SUPPLY PACKAGE**

(Required for the PPC-101 Equipment)

**Supply Package Includes:**

- Brushes (for cleaning view tubes)
- Disinfectant Solution
- Air Freshener
- Sanitation End Connectors (pack of twenty)
- Stainless Steel Cleaner
- Surface Disinfectant
- Two 1 Micron Rust/Sediment filter cartridges
- Two 0.5 Micron Carbon Block filter cartridges

**Package Includes a 10% Discount:**

**\$ 155.64**

**Disposable Speculums needed - not included in supply package**



COLON HYDROTHERAPY, INC.®

3145 SW 74<sup>th</sup> Terrace, Ocala, FL 34474

Order Lines 352-401-0303

www.colonhydrotherapy.com ~ E-Mail: sales@colonhydrotherapy.com

**COLON HYDROTHERAPY SYSTEM  
PPC-101 (Professional Portable Colonic Equipment)  
CLINICAL MODEL WITH SPECIMEN COLLECTOR**

**MODEL PPC-101 WITH SPECIMEN COLLECTOR  
INCLUDES: COLON HYDROTHERAPY SYSTEM PPC-101 WITH:**

- Specimen Collector
- Temperature and Pressure Safety Systems
- Self-Sanitizing Unit
- Built-In Sink & Faucet
- Manual & Installation & Video
- Built-In Rust/Sediment, Carbon & UV Water Treatment System

**PPC-101 Clinical Model With Specimen Collector: Call In**

**SUPPLY PACKAGE**

(Required for the PPC-101 Equipment)

**Supply Package Includes:**

- Brushes (for cleaning view tubes)
- Disinfectant Solution
- Air Freshener
- Sanitation End Connectors (pack of twenty)
- Stainless Steel Cleaner
- Surface Disinfectant
- Two 1 Micron Rust/Sediment filter cartridges
- Two 0.5 Micron Carbon Block filter cartridges

**Package Includes a 10% Discount:**

**\$ 155.64**





COLON HYDROTHERAPY, INC.®

3145 SW 74<sup>th</sup> Terrace, Ocala, FL 34474

Order Lines 352-401-0303

www.colonhydrotherapy.com ~ E-Mail: sales@colonhydrotherapy.com

**Disposable Speculums needed - not included in supply package**

## PHYSICAL SPECIFICATIONS

<b>Cabinet:</b>	<b>Carrying Case:</b>
11" Height	25.3 Height
4.5" Depth	11.7 Depth
19"Width	18.6 Width
31.5 lbs.	21.5 lbs.

- Connections: Hot & Cold Water, Electrical and Drainage Lines
- Portable Carrying Case: On Wheels with a pull up handle for easy traveling.
- With Built-In Ultra-Violet System

## OPTIONAL ACCESSORIES

- ◆ Disposable Speculums Kits
- ◆ Stainless Steel Cart with Sewage Tank



## ◆ Stand with Caster Wheels FEATURES

Clearwater Colon Hydrotherapy, Inc. offers a colonic irrigation system with a one year warranty.

The Professional Portable Colonic Equipment is equipped with the following features:

- ◆ Completely Closed System
- ◆ Dual purpose capabilities: traveling or fixed locations
- ◆ Three options for Water Line connections
- ◆ Two options for Waste Line connections
- ◆ Pressure & Temperature control & shut down valve
- ◆ Water Pressure Regulator - Pressure Relief System
- ◆ Wall Bracket
- ◆ Built-In Rinse System after disinfecting
- ◆ Natural Light Behind View Tube
- ◆ Separate Water Filtration System



COLON HYDROTHERAPY, INC.®

3145 SW 74<sup>th</sup> Terrace, Ocala, FL 34474

Order Lines 352-401-0303

www.colonhydrotherapy.com ~ E-Mail: sales@colonhydrotherapy.com

◆ UV Built into Equipment

with the colonic equipment  
mixing valve.

**TRAVELER DUAL**  
**PURPOSE CAPABILITIES**

**TRAVELING ABILITY**

Water Line Connections (2 Options)

1. Single Sink Operations:
  - ◆ Single hot & cold water line combination. Line is affixed to the sink faucet for the hot and cold water supply.
  - ◆ The temperature is regulated at the sink faucet.
  - ◆ The colonic system mixing valve is then by passed, when using the combination hot and cold water supply inlet connection.
2. Dual sink operation:
  - ◆ Separate hot & cold water lines. Individual water lines are affixed to separate sink faucets. (If available)
  - ◆ One sink faucet is placed in full cold position and the other line is in full hot position and the lines are connected to the hot & cold inlet ports on the colonic equipment.
  - ◆ The temperature is regulated

**PERFORMANCE**  
**SPECIFICATIONS**

- ◆ Equipped with the latest filtration System
- ◆ UV built into Equipment
- ◆ Safe connect and disconnect of Water, Sewer, and Electrical
- ◆ Portable
- ◆ Regulated Temperature and Pressure
- ◆ Accurate and sensitive indication of pressure and temperature
- ◆ Water in View Tube is full at all times for viewing
- ◆ Protection from contamination to the equipment and the client

**INSTALLATION**  
**GUIDELINES**

- / Drain height of 12" or less
- / Water pressure of 40 to 45
- / Water heater of 40 gallons or greater (greater is better)
- / Treatment table height 1 to 2 " higher than the view tube
- / Hot and cold water supply lines
- / 110/120 Volt electrical wall outlet



COLON HYDROTHERAPY, INC.®

3145 SW 74<sup>th</sup> Terrace, Ocala, FL 34474

Order Lines 352-401-0303

www.colonhydrotherapy.com ~ E-Mail: sales@colonhydrotherapy.com

**COLON HYDROTHERAPY SYSTEM  
PPC-101 (Professional Portable Colonic Equipment)  
THE TRAVELER**

**MODEL PPC-101 "THE TRAVELER"**

**INCLUDES: COLON HYDROTHERAPY SYSTEM PPC-101 WITH:**

- Temperature and Pressure Safety Systems
- Self-Sanitizing Unit
- Carrying Case on wheels with pull up handle
- Manual & Installation/Operation & Video
- Built-in Ultra-Violet System, including a separate unit with Hot & Cold - 4 filter stainless steel Water Filtration Treatment System

**PPC-101 "The Traveler" Model (U.S. Patent No. 5,871,463): Call In**

**SUPPLY PACKAGE**

(Required for the PPC-101 Equipment)

**Supply Package Includes:**

- Brushes (for cleaning view tubes)
- Disinfectant Solution
- Air Freshener
- Sanitation End Connectors (pack of twenty)
- Stainless Steel Cleaner
- Surface Disinfectant
- Two 1 Micron Rust/Sediment filter cartridges
- Two 0.5 Micron Carbon Block filter cartridges

**Package Includes a 10% Discount: \$ 155.64**

**Disposable Speculums needed - not included in supply package**



**COLON HYDROTHERAPY, INC.®**

3145 SW 74<sup>th</sup> Terrace, Ocala, FL 34474

Order Lines 352-401-0303

www.colonhydrotherapy.com ~ E-Mail: sales@colonhydrotherapy.com

**COLON HYDROTHERAPY SYSTEM**  
**PPC-101 (Professional Portable Colonic Equipment)**  
**“THE TRAVELER” With Options**  
**Sewage Tank Stand and**  
**Stainless Steel Stand**

**Stainless Steel Cart with Sewage  
Tank for Traveler**

- ◆ **33 Gallon Septic Tank - Drainage System**
- ◆ **with Handicap Toilet Height**
- ◆ **Lower Storage Tray**
- ◆ **Adjustable Height for Traveler (Range 31.5 to 40.0 inches)**
- ◆ **On Locking Caster Wheels (Wt.113 lbs)**



**Stainless Steel Stand for Traveler**

- ◆ **Meets Required Height of 28"**
- ◆ **Lower Storage Tray for Filters**
- ◆ **On Locking Caster Wheels**





**COLON HYDROTHERAPY, INC.®**

3145 SW 74<sup>th</sup> Terrace, Ocala, FL 34474

Order Lines 352-401-0303

www.colonhydrotherapy.com ~ E-Mail: sales@colonhydrotherapy.com

## ***Water Filtration /ystem /upplies***

1. The first stage of filtration is a 1 Micron Sediment filter, filtering sediment, rust, and dirt.
2. The second stage of filtration is a 0.5 Micron Carbon, filtering taste and odor, lead reduction, cyst reduction (giardia, cryptosporidium).
3. The third stage of filtration is a UV bulb, filtering bacteria and viruses.

### **Granular Activated Carbon Cartridges**

- ◆ 5 inch and 10 inch



### **Fiber Sediment Cartridges**

- ◆ 5 inch and 10 inch



### **Carbon Filter (Gac Inline) for Other Manufacturer Units**

- ◆ 10 inch







COLON HYDROTHERAPY, INC.®

3145 SW 74<sup>th</sup> Terrace, Ocala, FL 34474

Order Lines 352-401-0303

www.colonhydrotherapy.com ~ E-Mail: sales@colonhydrotherapy.com

## NEW SPECULUM INFLOW WATER LINE CONNECT AND DISCONNECT DIRECTIONS - D/C

- 1) On the left side of the unit you will find a male brass style fitting Female disconnect facing outward - as shown in the photo.



- 2) **To Connect:** Take the white disconnect and connect it by a simply alignment then push in. You should hear and feel it click into place.



- 3) **To Disconnect the inflow line:** Push on the Female disconnect inward and the fitting will pop out.



### PLEASE NOTE:

**This quick and easy connector device will be on each and every Speculum kit line. Be sure when ordering to indicate that you have the new DC connector. This more sanitary feature for the equipment.**

**FOR ANY CLEARWATER UNITS: You can convert your equipment to the new CCH D/C connector. Call us and indicate that you want the new connector, fits all units ever built. It will save ware and tare on your unit and you will no longer have to cut off the hose with a sharp object.**



COLON HYDROTHERAPY, INC.®

3145 SW 74<sup>th</sup> Terrace, Ocala, FL 34474

Order Lines 352-401-0303

www.colonhydrotherapy.com ~ E-Mail: sales@colonhydrotherapy.com

## *Disposable /speculums*

**Available in Large, Medi and Small sizes, Bulb and Straight styles**



### FEATURES

Large Straight or **Small Straight, Medi Straight, Large Bulb** or **Small Bulb**  
48" or 42" Waste Hose length  
1/4" or 3/8" Inflow Hose  
Standard Hose or G-Hose

Designed for easier insertion and greater client comfort. Obturator is also designed with a longer thumb tab for ease in handling.  
Lubricant packet (net wt. 5g) included.

### BIO-COMPATIBILITY

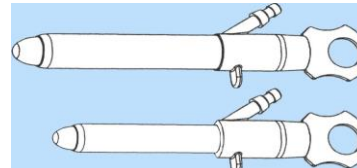
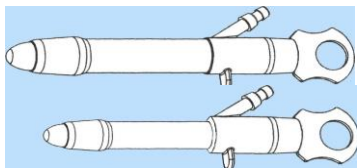
#### TEST RESULTS:

*An independent laboratory study was conducted to determine bio-compatibility on the speculums and hosing. The laboratory was looking for harmful: chemicals and toxicity that would be leached from the plastics itself. There was no findings of resins or toxicity found that could be derived by contact from this material. It was given a Superior Medical Rating.*

### BULB STYLE

(PATENT NO. US D452004S)

### STRAIGHT STYLE





COLON HYDROTHERAPY, INC.®

3145 SW 74<sup>th</sup> Terrace, Ocala, FL 34474

Order Lines 352-401-0303

www.colonhydrotherapy.com ~ E-Mail: sales@colonhydrotherapy.com

## NEVER RUN OUT OF STOCK WITH OUR AUTOSHIP PROGRAM

According to several management studies, the single most important characteristic of an effective office is the ability to manage time and worries.

Ask yourself these questions:

- ☹ Are you running out of stock?
- ☹ Do you have a hard time meeting deadlines?
- ☹ Do you hate keeping up with your inventory?
- ☹ Do you call to overnight items, because you're running short?
- ☹ Do you worry about canceling appointments, because you do not have what you need?
- ☹ Do you hastily call to order stock, pressed for time, only to remember something more after you already hung up the phone?
- ☹ Are you busy with patients and do not have the time to call in the orders?
- ☹ Were you ever "out of business" because your stock hasn't arrived or you forgot to place that order?
- ☹ Do you check with everyone to make sure someone has placed your order?

If you answered YES to even one or more of these questions, you're sure to benefit from our popular, effective method to ship what you need, and have it there, when you need it.

The program I just introduced is our **AUTO-SHIP Program**.

- ☺ You choose what you want shipped.
- ☺ When you want it shipped.
- ☺ How much you want shipped.

# CLEARWATER

COLON HYDROTHERAPY, INC.®

3145 SW 74<sup>th</sup> Terrace, Ocala, FL 34474

Order Lines 352-401-0303

www.colonhydrotherapy.com ~ E-Mail: sales@colonhydrotherapy.com

But the best benefit is .....😊.... you get a discount for having us help you out.

You now have peace of mind, NO stress, NEVER run out. Results: SAVE TIME and MONEY.

Use the enclosed “Auto Ship Program Agreement” in the pocket of this catalog to tailor your Auto-Shipment needs and drop it in the mail, e-mail it, or give us a call and we will help you get started.

Some suggestions along with your speculum order are, ordering a case of Underpads every other order, or adding Filters and gloves as needed. We can also take a look at your ordering history, which can help you in your decision.

We want to show you how to eliminate an unnecessary interruptions, so we suggest that you save time by making time to plan your Auto-Shipment right now, while you still have a mind to save time. Your business will be exploding!!

😊 We Have It All Under Control.





COLON HYDROTHERAPY, INC.®

3145 SW 74<sup>th</sup> Terrace, Ocala, FL 34474

Order Lines 352-401-0303

www.colonhydrotherapy.com ~ E-Mail: sales@colonhydrotherapy.com

## ***Therapy Table & Accessories***

### **Adjustable Electric Therapy Table**



#### **ADVANTAGES:**

**(Qualifies for Wheel Chair Accessible Tax Credit)**

- Lowers to Wheel Chair Height
- Adjustment for Patient and Therapist Body Mechanics
- A Fully Equipped Bodywork Table
- Minimal Maintenance

#### **FEATURES:**

- Available in 30" wide x 6' long
- 10" Extension can be added to the table
- Two Designs (Flat or Tilt Back)
- Upholstery color is Buff
- Frame color is a textured ice white epoxy paint

#### **SPECIFICATIONS:**

- Top of the pad height at lowest point is 17"
- Top of the pad height at highest point is 30"
- Pad is 3" of med density foam
- Air operated foot controls
- Standard 115 VAC, 4 AMPS
- Standard 8 ft power cord



## Light Weight Portable Table and Accessories



- Upholstery Standard Color - Blue or Black  
(In Stock) 28 to 29 lbs
- Other Upholstery Colors - By Special Order Only
- **Table Cart Carrier** - Weight 9 lbs, but will hold 180 lbs
- 27" x 14" x 7" When Closed
- Enjoy the ease of rolling your table where ever you go.



- **Pillows: Provide the correct level of support for prone, supine and side-lying positions**
  - ▶ **Wedge** - With Matching Vinyl Cover
  - ▶ **Round Bolster** - 6" x 6" x 26"
  - ▶ **Large Round Bolster** - 9" x 9" x 26"  
(Support under the knees, ankles or use for side posture support)





COLON HYDROTHERAPY, INC.®

3145 SW 74<sup>th</sup> Terrace, Ocala, FL 34474

Order Lines 352-401-0303

www.colonhydrotherapy.com ~ E-Mail: sales@colonhydrotherapy.com

## Therapist's Chair and Accessories

- Designed for the professional therapists
- Designed for comfort of sitting for long periods
- Seat in your choice of color
- Easy rolling on caster wheels



- Lightweight, yet sturdy
- "No-slip, no-tip" design
- Durable top, covered with black ribbed rubber and trimmed with grey molding



- Waterproof Table Cover
- Protects your table from moisture and grime
- No liquids seep into your table's foam



- Table Warmer with Thermostat Controls
- 2 styles - Basic and Deluxe
- Keep clients warm, comfortable, and happy during treatment





COLON HYDROTHERAPY, INC.®

3145 SW 74<sup>th</sup> Terrace, Ocala, FL 34474

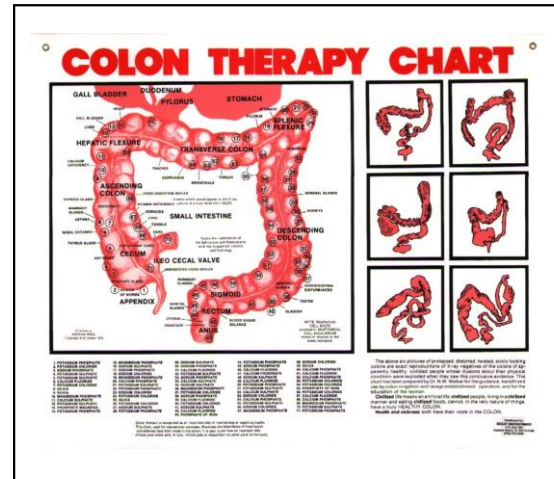
Order Lines 352-401-0303

www.colonhydrotherapy.com ~ E-Mail: sales@colonhydrotherapy.com

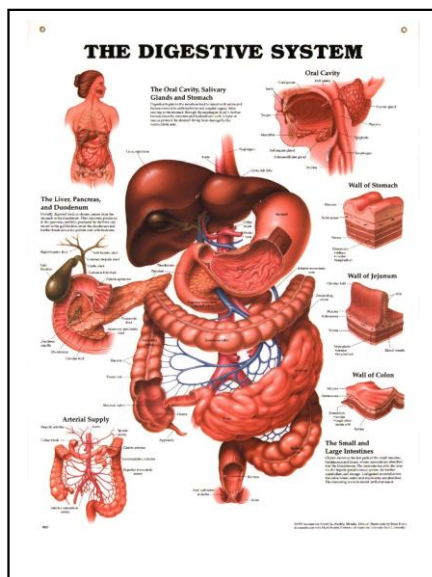
## Colon Therapy Charts



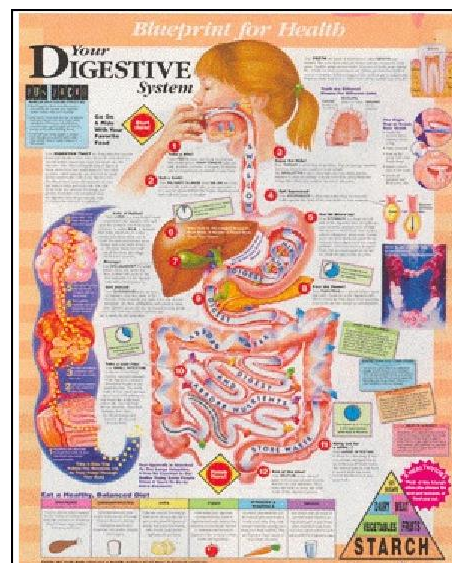
**COLON MODEL**



**COLON THERAPY CHART**



**THE DIGESTIVE SYSTEM**



**BLUEPRINT FOR HEALTH**



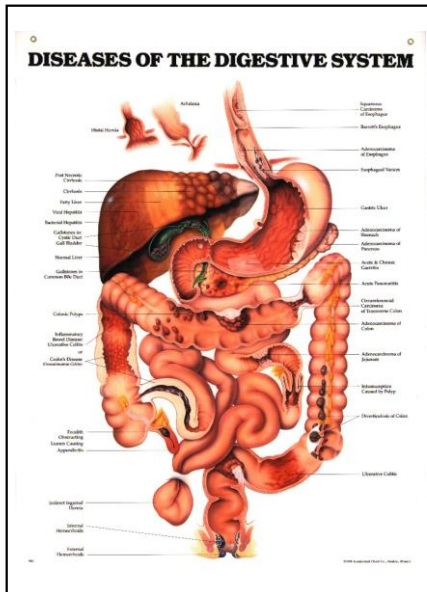


COLON HYDROTHERAPY, INC.®

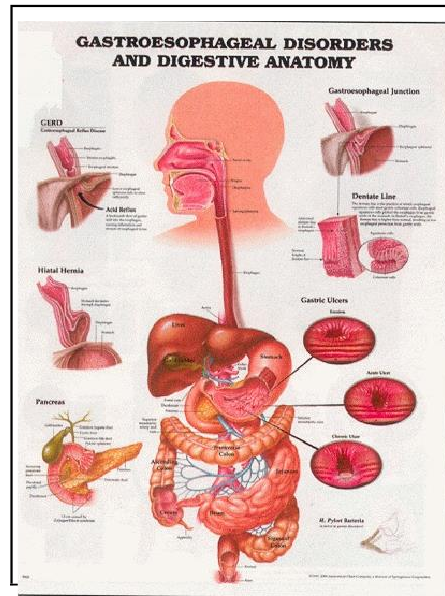
3145 SW 74<sup>th</sup> Terrace, Ocala, FL 34474

Order Lines 352-401-0303

www.colonhydrotherapy.com ~ E-Mail: sales@colonhydrotherapy.com



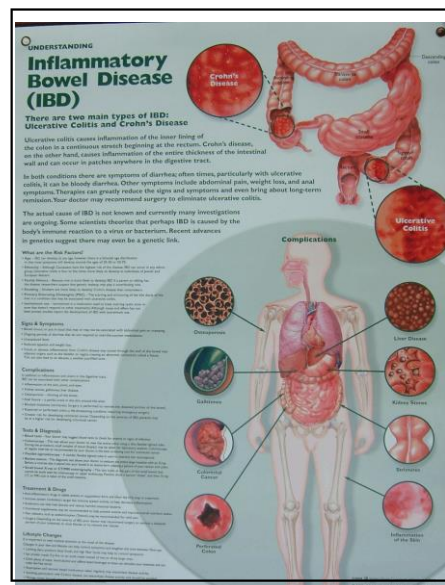
**DISEASES OF DIGESTIVE SYSTEM**



**GASTROESOPHAGEAL DISORDERS**



**BOWEL REFLEX POINTS**



**(IBD) INFLAMMATORY BOWEL DIS**

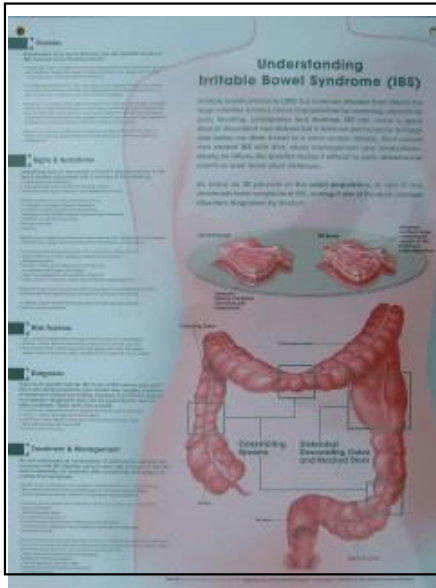


COLON HYDROTHERAPY, INC.®

3145 SW 74<sup>th</sup> Terrace, Ocala, FL 34474

Order Lines 352-401-0303

www.colonhydrotherapy.com ~ E-Mail: sales@colonhydrotherapy.com



**UNDERSTANDING IRRITABLE  
BOWEL SYNDROME (IBS)**



**STAINLESS STEEL  
VIEW TUBE BRUSH HOLDER**

## GOWNS

- ◆ Custom Made
- ◆ Small, Medium, Large, X-Large, and XX-Large
- ◆ Two different Lengths (To the Calves, or ankles)
- ◆ Fade-Resistant, Wrinkle-Free
- ◆ Cotton/Poly Seersucker Material
- ◆ Soft Elegant Pastel Stripes
- ◆ Velcro Closures





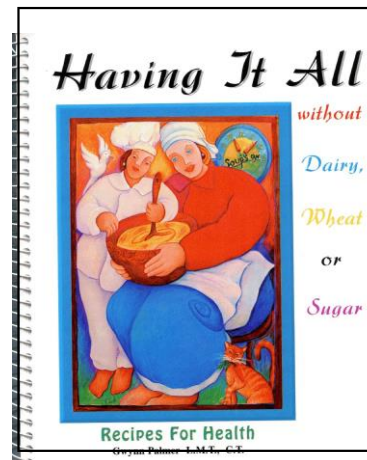
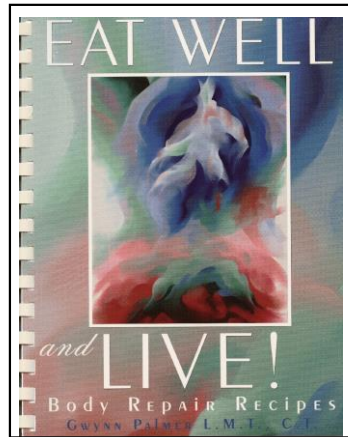


COLON HYDROTHERAPY, INC.®

3145 SW 74<sup>th</sup> Terrace, Ocala, FL 34474

Order Lines 352-401-0303

www.colonhydrotherapy.com ~ E-Mail: sales@colonhydrotherapy.com



**THESE TWO GREAT NON-GLUTEN RECIPE BOOKS ARE A MUST FOR YOUR COOKBOOK LIBRARY! BY GWYNN PALMER**



**SUPPLY PACKET**



**SPECULUM SAMPLE PACKET**



**EXAM GLOVES**



COLON HYDROTHERAPY, INC.®

3145 SW 74<sup>th</sup> Terrace, Ocala, FL 34474

Order Lines 352-401-0303

www.colonhydrotherapy.com ~ E-Mail: sales@colonhydrotherapy.com

**Attention Equipment and/or Speculum Buyers:**

**In accordance with Federal Regulations, it is a requirement that a letter be placed in the file of the equipment and/or purchasing speculums. When you purchase our equipment, we will need one for the equipment and one for the ordering of the disposable speculums. A sample letter has been enclosed for you to follow exactly with no variations for both in one script.**

“Caution: Federal law restricts this device to sale by or on the order of a physician.” 21CFR801.109

**This regulation applies to all Class II Colon Therapy Equipment and Disposable Speculums by every Manufacturer both United States and Foreign Countries.**

We also have a dual device listing on our disposables speculums for Class I devices, which has different package labeling. To ensure you are in compliance with the Federal Law, we will need to be advised of the class of device that you are using so that we may provide you with the proper package labeling.

**Sample Letter**

Letter Head with Doctor's Name, Address and Phone  
number

**Clearwater Colon Hydrotherapy, Inc.**

**3145 S.W. 74<sup>th</sup> Terrace**

**Ocala, Florida 34474**

**Subject: Order to Purchase**

**Re: PPC-101 Colon Hydrotherapy Unit and/or Disposable Speculums**

**In Accordance with the Federal Code of Regulations 21 Food and Drugs, Parts 800-1299 as stated below.**

“Caution: Federal law restricts this device to sale by or on the order of a physician.”

21CFR801.109

**This letter is to serve as a order for the following:**

**Person: \_\_\_\_\_ Clinic: \_\_\_\_\_ to  
purchase PPC-101 Colon Hydrotherapy Unit and/or Disposable Speculums/Kits.**

**Sincerely, Doctor's Signature  
Printed Name and License #**



COLON HYDROTHERAPY, INC.®

3145 SW 74<sup>th</sup> Terrace, Ocala, FL 34474

Order Lines 352-401-0303

www.colonhydrotherapy.com ~ E-Mail: sales@colonhydrotherapy.com

## ***Product Information and Price List***

### **ULTRA-VIOLET WATER TREATMENT SYSTEMS**

Ultra-Violet Lamp (Replacement Bulbs 10000 Hour UV Bulb.....\$49.95

### **PROFESSIONAL HYDROTHERAPY MODELS**

PPC-101 The Traveler..... Call In

PPC-101 Clinical..... Call In

PPC-101 Clinical with Specimen Collector..... Call In

Options For Traveler:

Stainless Steel Cart with Sewage Tank.....\$2,500.00

Stainless Steel Table (27 1/4" high).....\$550.00

### **DISPOSABLE SPECULUMS**

Large & Small BULB Styles.....\$4.50

Large, Midi & Small STRAIGHT Styles.....\$4.50

Kits with D/C Connectors .....\$4.50

Kits Through the Auto-Shipment Program.....(\$0.20 Discount)

Speculum Sample Pack - Standard.....\$19.75

Speculum Sample Pack - D/C.....\$20.75

(The Sample Packets Consists of: 5 Complete Kits - 1 Kit for Each Size and Style of Speculums)

### **WATER FILTER REPLACEMENT CARTRIDGES**

Granular Activated Carbon Cartridges (0.5 Micron Taste/Order/Chemical)

10 Inch.....\$25.95

5 Inch.....\$22.50

Fiber Sediment Cartridges (Rust/Sediment 1 Micron)

10 Inch.....\$8.00

5 Inch.....\$7.00

Carbon Filter (GAC Inline) For Other Manufacturer Units

10 Inch.....\$9.95



COLON HYDROTHERAPY, INC.®

3145 SW 74<sup>th</sup> Terrace, Ocala, FL 34474

Order Lines 352-401-0303

www.colonhydrotherapy.com ~ E-Mail: sales@colonhydrotherapy.com

## CLINICAL & PORTABLE COLON THERAPY TABLES AND ACCESSORIES

Light Weight Portable Table (28 to 29 Pounds) .....	Call in for Updated Pricing
Adjustable Electric Therapy Table.....	Call in for Updated Pricing
Adjustable Electric With Tilt Option .....	Call in for Updated Pricing
Table Cart Carrier .....	\$99.00
Plastic Sheet (Table Cover).....	\$28.95
Table Cover Warmer (Basic) .....	\$89.00
Table Cover Warmer (Deluxe).....	\$120.95
Therapist's Chair .....	\$425.00
Pillow Wedge (with matching cover) .....	\$180.00
Bolster Full Round (with matching cover) .....	\$65.95
Bolster Jumbo Round (with matching cover) .....	\$79.00
Step Stool (Medical Grade Construction) .....	\$69.00
Toilet Step .....	\$69.00

## COLON THERAPY SUPPLIES

Supply Packet (10% Discount Applied) .....	\$145.64
(Packet Consists of: - Pack of two View Tube Brushes, Disinfectant Solution, Order Neutralizer/Cleaner, Pack of 20 Sanitation End Connectors, Stainless Steel Cleaner, Surface Disinfectant, 2 Sediment Filters, and 2 Carbon Filters)	
Surface Disinfectant Decontaminate Cleaner .....	\$15.95
Disinfectant Solution (Approved for Endoscopic Equipment 1 Gallon) .....	\$34.95
Sanitation End Connectors (Pack of 20) .....	\$5.25
Stainless Steel Cleaner and Polish (1 Spray Can 16 oz).....	\$18.95
Odor Neutralizer/Cleaner Spray (16 oz) .....	\$14.95
View Tube Brushes (Pack of two 24" Length) .....	\$24.00
Stainless Steel Brush Holder.....	\$59.95
View Tube for PPC-101 Clinical Model (Quantity 1).....	\$75.00
View Tube for PPC-101 Traveler Model (Quantity 1).....	\$75.00



COLON HYDROTHERAPY, INC.®

3145 SW 74<sup>th</sup> Terrace, Ocala, FL 34474

Order Lines 352-401-0303

www.colonhydrotherapy.com ~ E-Mail: sales@colonhydrotherapy.com

Light Bulb for View Tube Assembly (Quantity 1) 9000 hr Natural Lighting .....	\$18.00
Exam Gloves - Powder Free, Nitrile Gloves.....	\$8.85
(Small, Medium, Large and X-Large)	
Underpads (Large Case of 150). ....	\$49.98
Disposable Footies. ....	\$39.00
Disposable Gowns (Case of 50).....	\$26.55
Gowns (See Sizes Below)	
Large - 42" .....	\$18.95
X-Large - 42" .....	\$20.95
XX-Large - 42" .....	\$22.95
Large - (Custom 51" Size to Ankle).....	\$24.95
Extra Large - (Custom 51" Size to Ankle) .....	\$26.95
Lubricant (Tube) .....	\$5.95
Hemorrhoid Relief Cream.....	\$16.95

***Recommended Reading for Certification. These are Excellent References to have in your library. Items Marked with an \* are Suggested.***

## **BOOKS**

- \* Office Safety Manual (Set to OSHA Standards for Colon Therapy  
Author: Mary Ruth Baker .....\$35.00
- \* Dr. Protocol Manual - Author: Mary Ruth Baker .....\$35.00
- \* Staying Healthy with the Seasons.....\$15.95

Eat Well and Live (Gluten Free - Author: Gwynn Palmer) .....	\$21.95
Having It All (Gluten Free - Author: Gwynn Palmer).....	\$22.95
Colon Health: The Key to a Vibrant Life.....	\$9.95
8 Weeks to Women's Wellness.....	\$16.95





COLON HYDROTHERAPY, INC.®

3145 SW 74<sup>th</sup> Terrace, Ocala, FL 34474

Order Lines 352-401-0303

www.colonhydrotherapy.com ~ E-Mail: sales@colonhydrotherapy.com

## CD's

Medicine Woman (CD) Part I.....	\$15.95
Medicine Woman (CD) Part II.....	\$15.95
Medicine Woman (CD) Part III .....	\$15.95
Wheat Belly - (Set of 6 CD's).....	\$29.95
Why People Don't Heal and How They Can - (Set of 6 CD's) .....	\$24.95

## MODELS

Colon Model.....	\$82.80
------------------	---------

## CHARTS

Colon Therapy (Chart of the Colon) .....	\$23.99
Digestive System.....	\$23.99
Blueprint for Health Chart .....	\$23.99
Diseases of the Digestive System .....	\$23.99
Gastroesophageal Disorders.....	\$23.99
Inflammatory Bowel Disease (IBD) .....	\$23.99
Understanding Irritable Bowel Syndrome (IBS) .....	\$23.99

Quick Check List - Morning Set-up, Therapy & Disinfecting the Unit After Use

For Clinical .....\$3.95

For Traveler .....\$3.95

**PLEASE NOTE:** Prices are subject to change without notice and do not include shipping charges.